



COUNTRY ACCENTS®
 615 Dunwoody Road, Williamsport, PA 17701
 Phone (570) 478-4127 • Fax (570) 478-2007 • M-F, 9-5 EST
 Website: piercedtin.com • Email: sales@piercedtin.com

Kits to Craft at Home

Your source for pierced tin since 1979.

Our Exclusive Grandmother's Pie Safe Kit

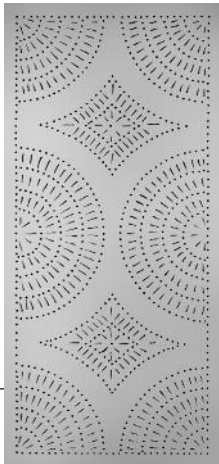


Come home to tradition...re-create a memory...fashion an heirloom. This version of an old favorite can be easily reproduced using our plans and kit for the pierced tin panels. **Package contains plans for the cabinet, materials list, full cutting and assembly instructions.** Wood and hand tools other than tin punches are not included. The finished cabinet stands 54" high, 32" wide and 12" deep.

- 4 - 9" x 19" Tin Blanks
- 4 - 8" x 19" Tin Blanks
- 1 - 6" x 8" Practice Tin
- 1 - Tin Punching Tool, T-0359
- Lampmaker's Chisel, T-0259-3/8"
- Complete tin punching and finishing instructions are included in this kit.
- 3 sets of pierced tin patterns, size coordinated to the openings on the finished cabinet:
 - 1) Wild Tulips P-1047
 - 2) Diamond Over Diamond P-1046
 - 3) Blue Bells P-1006

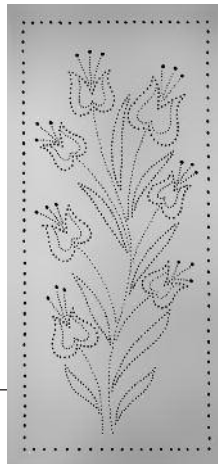
Kit K2B-BT, Tin Blanks — \$68.00 (+ \$18 s/h)
Kit K2B-BT, Copper Blanks — \$136.00 (+ 15% s/h)
Kit K2B-BT, Brass Blanks — \$136.00 (+ 15% s/h)

The kit is also available with handpierced finished panels for those who do not wish to do the tin punching themselves:



Kit without tin and tools, but with finished panels in the Diamond Over Diamond design.

Kit K2B-RP1046
Tin Finish Only
\$175.00 (+ 15% s/h)



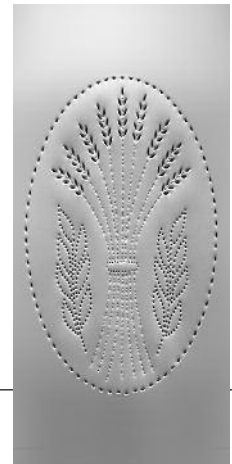
Kit without tin and tools, but with finished panels in the Wild Tulips design.

Kit K2B-RP1047
Tin Finish Only
\$162.50 (+ 15% s/h)



Kit without tin and tools, but with finished panels in the Blue Bells design.

Kit K2B-RP1006
Tin Finish Only
\$148.50 (+ 15% s/h)



Kit without tin and tools, but with finished panels in the Wheat in Oval design.

Kit K2B-RP1176A
Tin Finish Only
\$148.50 (+ 15% s/h)

Set of 8 Tin Blank Panels \$ 40.00 (+ \$18 s/h)

Available for those having already purchased the kit and wishing to recreate the cabinet (sorry, sets cannot be broken.)
 Includes (4) 9" x 19" and (4) 8" x 19" Blank Panels to fit the finished cabinet.

"Wood Magazine" Pie Safe Kit



Photo courtesy of Wood Magazine ©1992.

This charming cabinet or "pie safe" was the feature of an extraordinarily popular article appearing in *Wood Magazine* (August 1992) and subsequently as a focus article in their book "*The Best of Wood*," published by Meredith Corporation. These kits were developed by popular demand for that pictured project. Plans, materials lists and measured exploded drawings are clear, concise and easy to follow. This project has proved to be one of the most popular ones ever to appear in *Wood*. Many have created these cabinets to use as decor, give as gifts or some have even entered them in woodworking shows — and won prizes for their craftsmanship!

The project is available with your choice of options:

- Alternate panel patterns may be found in the pattern listings for the 10x10 size.
- These 10x10 panels may be purchased individually in any of the other finishes listed as well. (*The special pricing is for tin only.*)
- The plans alone may be purchased or choose the package which includes the blank tin, tool, and pattern to complete the project, with or without the plans — your choice.
- Tell us if you want the option of four panels or twelve.
- For those lacking time or inclination, we offer the finished panels ready to install.

The finished cabinet stands 24"W x 14"D x 59¼"H.

WK-01 \$12.95 ppd.
Plans Only
(or add plans to any kit below for \$7.95)

WK-01A \$24.50 + \$12 s/h
4 – 10x10 tin blanks
1 – practice tin
1 – T-0359 point tool
1 – 1041-P pattern (10x10)
Tin punching & finishing instructions

WK-01B \$55.00 + \$18 s/h
12 – 10x10 tin blanks
1 – practice tin
1 – T-0359 point tool
3 – 1041-P (10x10) patterns
Tin punching & finishing instructions

WK-01C \$65.00 + \$15 s/h
4 – 10x10 RP-1041 ready to install
pierced finished panels in tin finish

WK-01D \$170.00 + standard 15% s/h
12 – 10x10 RP-1041 ready to install
pierced finished panels in tin finish



Timeless Treasure Pie Safe Kit

The finished cabinet is 30"W x 12¼"D x 48"H.



Painted Jelly Cupboard Kit

The finished cabinet is 21"W x 16"D x 48"H.

Timeless Treasure Pie Safe Kit with Pierce-it-yourself Panels

Includes: Plans
2 – tin piercing tools
1 – 1005-P pattern
6 – 10x10 blank tin
Full instructions

PSK1005 – \$60.00 + \$15 s/h

Timeless Treasure Pie Safe Kit with Finished Panels

Includes: Plans
6 – pre-punched, ready-to-install tin inserts

PSK1005-RP – \$101.00 + \$15 s/h

Painted Jelly Cupboard Kit with Pierce-it-yourself Panels

Includes: Plans
2 – tin piercing tools
1 – 1244-P pattern
3 – 14x10 blank tin
Full instructions

PJCK1244 – \$38.00 + \$15 s/h

Painted Jelly Cupboard Kit with Finished Panels

Includes: Plans
3 – pre-punched, ready-to-install tin inserts

PJCK1244-RP – \$80.00 + \$15 s/h

Beginners Kit



To start you off in this time-honored craft...

Back by popular demand — this updated version of our original kit, offered first in 1979.

This kit fits the needs of the beginner with a wide selection of metal and patterns.

Especially for those wishing to “get the feel” of this art form, this kit fits the bill!

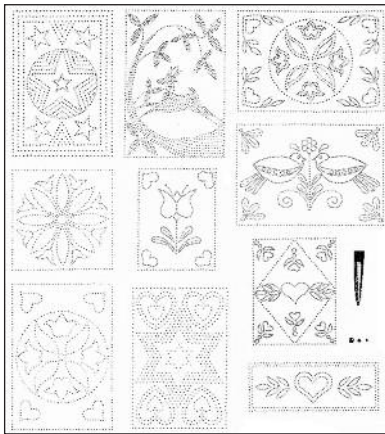
Kit contains:

- 1 - 10 x 10 Tin
- 1 - 7 x 9 Tin
- 1 - 8 x 10 Tin
- 1 - 5 x 12 Tin
- 1 - 5 x 7 Practice Tin
- 1 - T-0359 Point Tool
- 1 ea. pattern #'s: 1091P, 1070P, 1215P, 1041P
- Punching Instructions
- Tin Finishing Instructions

Kit BK-101\$19.95 + \$12 s/h = \$31.95

Kit BK-101 with catalog\$22.95 + \$12 s/h = \$34.95

Pattern & Tool Kits

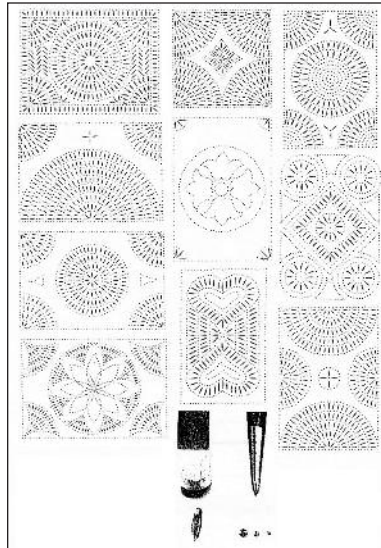


THE BASIC 1 contains:
 10 punch patterns: 1011P, 10x14
 1024P, 10x14°
 1036P, 10x14°
 1041P, 10x10
 1049P, 10x14
 1102P, 10x14°
 1103P, 8x10°
 1132P, 10x14
 1196P, 9x11
 1215P, 12x5
 1- Universal Point Tool, T-0359
 Full Tin Punching Instructions

BOOK1 – \$24.95 + \$12 s/h

Add Tin Blanks for Basic 1:
 (10) pieces of tin, in sizes to match patterns sizes in Book 1.

BOOK1-TIN – \$35.00 + \$18 s/h

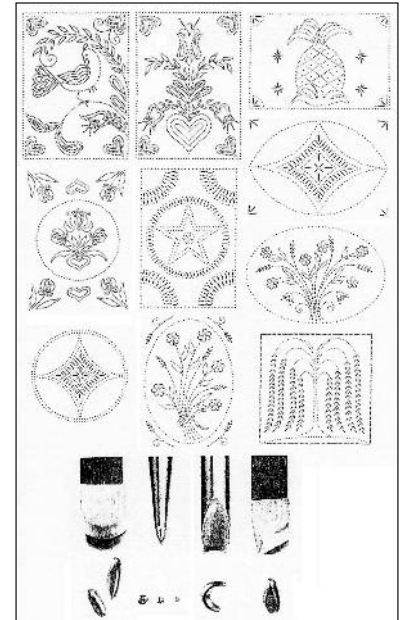


THE BASIC 2 contains:
 10 punch patterns: 1004P, 10x14°
 1006AP, 10x14°
 1007P, 10x10°
 1017P, 10x14
 1057P, 10x14°
 1087P, 10x14
 1088P, 10x14
 1104P, 10x14
 1105P, 10x14
 1135P, 10x14
 1- Universal Point Tool, T-0359
 1- Lamp Makers Chisel, T-0259 7/16
 Full Tin Punching Instructions

BOOK2 – \$40.95 + \$12 s/h

Add Tin Blanks for Basic 2:
 (10) pieces of tin, in sizes to match patterns sizes in Book 2.

BOOK1-TIN – \$40.00 + \$18 s/h



THE BASIC 3 contains:
 10 punch patterns: 1013P, 10x14°
 1022P, 12x16°
 1023P, 12x16°
 1037P, 10x14
 1042AP, 10x14°
 1065P, 10x14°
 1077P, 10x14
 1108P, 10x14°
 1131P, 10x10°
 1199P, 12x12

1- Universal Point Tool, T-0359
 1- Lamp Makers Chisel, T-0259 7/16
 1- Lamp Makers Chisel, mini
 1 - C Punch T-0459 5/16
 1 - Willow/Wheat Punch T-1181
 Full Tin Punching Instructions

BOOK3 – \$75.00 + \$12 s/h

Add Tin Blanks for Basic 3:
 (10) pieces of tin, in sizes to match patterns sizes in Book 3.

(oversize)
BOOK1-TIN – \$45.00 + \$22 s/h

© Copyrighted designs sold as patterns are the property of Country Accents®, and are copyright protected. They are intended for home use in craft projects by individuals. The unauthorized copying or modification of these designs by any means for the purpose of RE-SALE is expressly forbidden. Fraudulent use of these designs, either as shown or modified, will be prosecuted to the full extend of the law. All Rights Reserved.

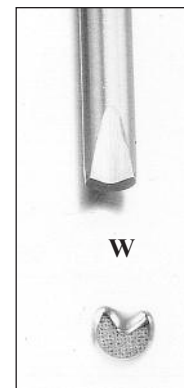
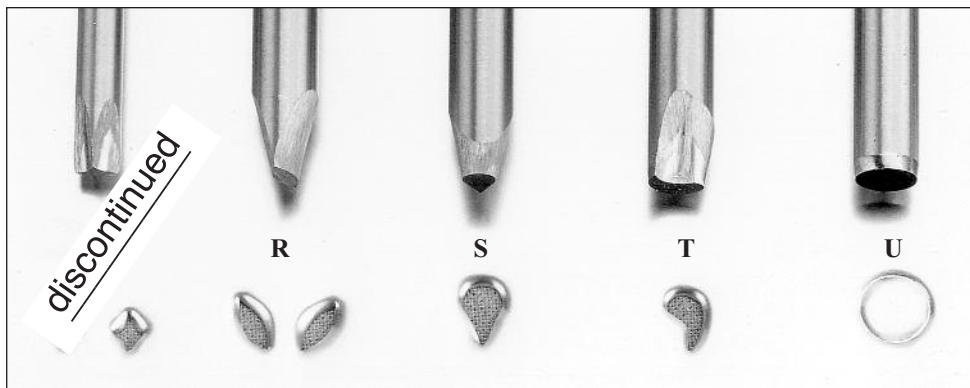
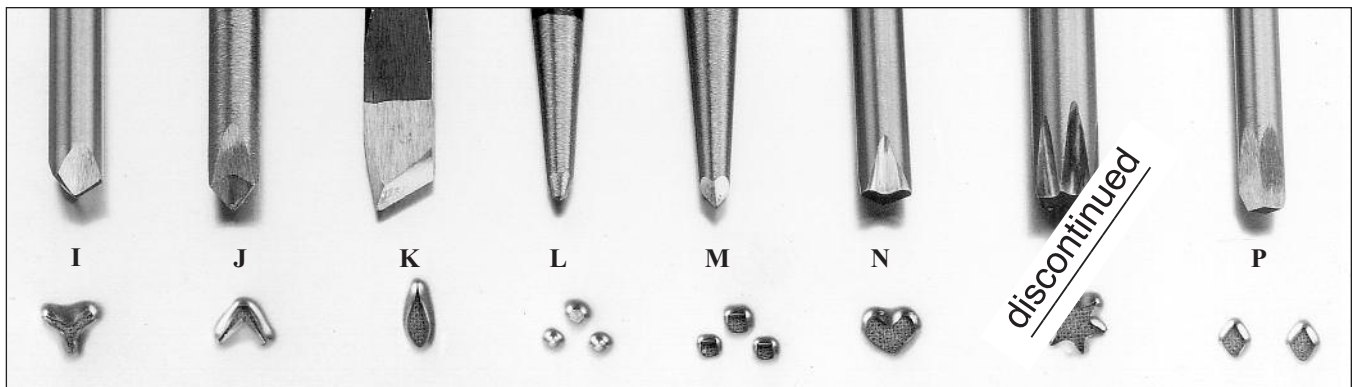
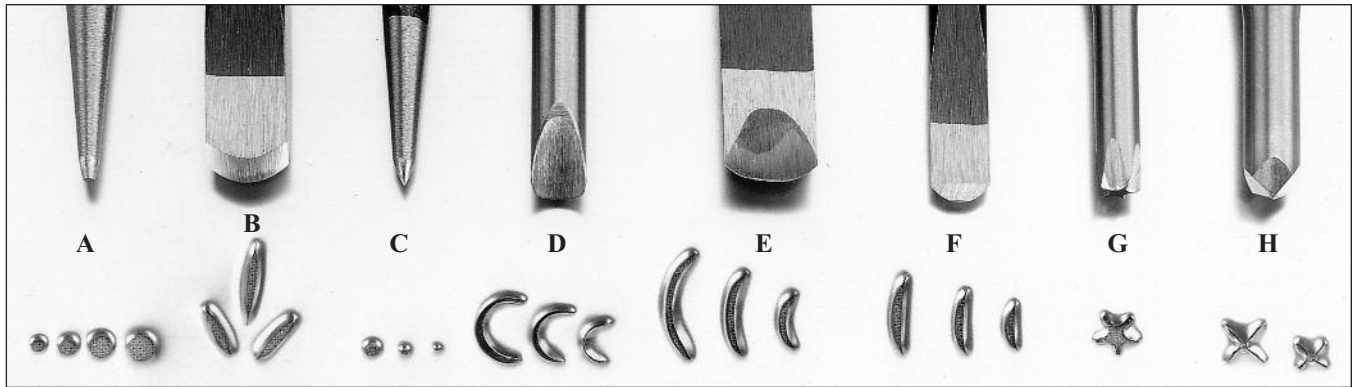
Tools for Tin Punching

U.S. made for crafters since 1979. All tools sold by Country Accents® are special tin punch tools, based on the lamp-makers' tools and/or designed and made by Country Accents®.

Our tools are made of high carbon tool steel, individually treated and are fully guaranteed against defective materials and workmanship.

Tools marked with a ❖ remove a healthy slug — we recommend using a good solid surface or base, such as particle board and a 12 oz. hammer. Set punch in place and tap lightly with a hammer first so it will flatten the tin onto the base and then strike a bit harder to punch out the slug. Repeat if necessary.

*Note: Tools are shown actual size.
Price List & Tool Descriptions on following page.*



Photo, Catalog #, Name	Catalog #	Cut	Price ea.
"A" T-0159 Basic Punch ❖ Used by tinsmiths because it removes a slug leaving a fairly smooth edge on the "rough" side. Recommended for use in geometric patterns because of uniform hole size.	T-0159-1/16	1/16	\$ 6.95
	T-0159-3/32	3/32	7.95
	T-0159-1/8	1/8	7.95
	T-0159-3/16	3/16	8.95
"B" T-0259 Lampmaker's Chisel Leaves a smooth elongated hole tapered on each end. Used for making Revere lanterns. This is a basic tool for <i>all</i> your punching needs.	T-0259-Mini	3/16	5.95
	T-0259-1/4	1/4	6.95
	T-0259-3/8	3/8	8.95
	T-0259-7/16	7/16	10.95
	T-0259-1/2	1/2	11.25
	T-0259-5/8	5/8	11.95

Photo, Catalog #, Name	Catalog #	Cut	Price ea.
“C” T-0359 Point The sharp point is a universal tool in tin punch. It makes tiny indentions or holes up to 1/8". It leaves sharp edges on the rough side of the tin.	T-0359	0 to 1/8	6.95
“D” T-0459 Chisel The tool to make flowers and unique decorative effects. Indispensable when executing folk art patterns.	T-0459-1/4 T-0459-5/16 T-0459-3/8	1/4 5/16 3/8	16.50 17.50 20.50
“E” T-0559 Curved Chisel A decorative punch. If used with lights behind the panels, gives a kaleidoscope effect.	T-0559-3/8 T-0559-1/2 T-0559-5/8	3/8 1/2 5/8	10.95 11.95 13.95
“F” T-0659 Beveled Chisel Excellent for use in borders, it brings out the pattern like a “frame within a frame.	T-0659-1/4 T-0659-3/8 T-0659-1/2	1/4 3/8 1/2	7.95 9.95 10.95
“G” T-0759 Star Punch ❖ Stars put a much desired accent on pierced tin panels! One of our most popular tools.	T-0759	1/4	23.90
“H” T-0859 Cross Punch The punch to be used with lacework-type patterns & as an accent; often used for borders.	T-0859 T-0859	1/4 3/8	15.95 16.95
“I” T-0959 3-Point Star Punch A time-honored tool used from the very beginning of this craft.	T-0959	1/4	14.95
“J” T-1081 Pineapple Punch One of our most unique tools — its primary use is making the burrs on pineapples.	T-1081	1/4	14.95
“K” T-1181 Willow Punch Originally devised for making leaves on willow branches, wheat patterns or a teardrop.	T-1181	5/16	17.95
“L” T-1282 Dullpoint Punch Used to make indentations on tin without breaking through. Designed for use where perforation is not desired, such as backsplashes behind stoves or sinks.	T-1282	3/32 indent	6.95
“M” T-1482 Cheesegrater or Square Punch Folks interpret square punched holes as being done with a nail. Square pointed nails were not invented until later. Another replica of a tinsmith’s tool.	T-1482	1/64 to 1/8	8.95
“N” T-1583 Heart Shape Punch ❖ A charming tool for accents or borders, especially well-suited for folk art patterns.	T-1583	1/4	21.90
“O” T-1683 6-Point Star Punch discontinued An original design well-suited for use on panels that will have light behind them.	T-1683	5/16	23.95
“P” T-1783 Diamond Punch Used on a panel with light behind it. Its uses are borders and accent work as well as part of the design.	T-1783	1/8	11.95
“Q” T-1883 Quatrefoil Punch discontinued Like a flower with four petals — the graceful quatrefoil design. Used where a look of authenticity is desired.	T-1883	3/16	12.90
“R” T-1983 Leaf Punch ❖ Used to simulate leaves in any application calling for foliage.	T-1983	5/16	17.95
“S” T-2083 Daisy Punch ❖ Suited for putting the petals on flowers in the folk art patterns; also can be used in borders.	T-2083	5/16	16.95
“T” T-2184 Swirling Leaf or Teardrop Punch ❖ Useful in geometrics or folk art where an authentic appearance is desired.	T-2184	5/16	19.95
“U” T-2294 Ring Punch This is a very useful tool to make berries, buds and use on borders as a very special accent.	T-2294-1/4 T-2294-5/16 T-2294-3/8	1/4 5/16 3/8	12.95 14.95 16.95
“W” T-2494 Dutch Tulip Punch ❖ A “forever favorite.” Used with borders to personalize your panels or for an authentic “country” feeling.	T-2494	1/4	11.95

Blank Materials – Prices & Ordering Information

	Standard Size	Price	Standard Size	Price
Tin Plate: (We supply instructions to dull or antique this all-time favorite material.)	5 x 7	\$ 1.20	9 x 12	\$ 3.50
	5 x 12	1.95	‡ 9 x 19	5.50
	6 x 8	1.60	10 x 10	3.50
	6 x 9	1.75	10 x 12	3.90
	7 x 9	2.15	10 x 14	4.75
	8 x 10	2.75	11 x 14	5.20
	8 x 12	3.25	12 x 12	4.95
	8 x 15	3.85	12 x 16	6.40
	‡ 8 x 19	4.80	‡ 12 x 24	8.95
	‡ 5 x 18	2.70	‡ 16 x 28	15.70

Custom or oversize cuts: please call for pricing. \$3.00 cutting charge per piece applies.

Antiqued Tin: We hand antique tin to achieve an old worn appearance. It is tin that has had the aging process speeded up: it does not have an applied finish. It is even in coloration and looks the same as tin might be found in an old pie cupboard.

‡ 16 x 24 \$ 24.50

Copper: Bright and new-looking copper. Excellent when sheen and luster are of prime concern.

‡ 12 x 24 \$ 25.60

‡ 16 x 24 \$ 28.20

Custom or oversize cuts: please call for pricing. \$3.00 cutting charge per piece applies.

Brass: This impressive material is very good to use when a lavish attention-getting appearance is desired. Most resplendent!

‡ 12 x 24 \$ 25.60

‡ 16 x 24 \$ 28.20

Custom or oversize cuts: please call for pricing. \$3.00 cutting charge per piece applies.

Antiqued Copper*: This dark finish accents the highlighting, so important, when patterns need to stand out. Very rich and impressive!

‡ 16 x 24 \$ 39.20

Antiqued Brass*: Burnished, elegant, luxe!

‡ 16 x 24 \$ 39.20

*Antiqued pieces have a hole 1/8" from top edge and water mark at bottom edge.

‡ Requires additional shipping/handling charges, minimum \$18 or 15% of order, whichever is greater.

! Please note: Sometimes quantities of 6+ pieces may require additional shipping. Please call.

IMPORTANT INFORMATION! READ CAREFULLY:

There is a minimum ordering requirement of \$15.00 on all blank metals. This applies to either standard sizes or custom cuts.

‡ **DON'T FORGET** — any orders for metal over 15" are subject to additional charges for the special packaging required. Call for price on packing & shipping these oversize pieces.

When ordering materials over standard size, please call for possible size limitations prior to placing order.

On all custom-cut materials there is a \$3.00 cutting charge per piece.

All of the metals we offer are approximately 28-30 ga. and have been specially selected for use in piercing and craft projects. It must be remembered that all of these materials are designed for industrial purposes. Every attempt is made to ship products free from obvious flaws and we guarantee that one side of the material will be suitable for use in craft or home decor purposes. However, some scratches and minor flaws are a result of mill handling and must be expected.

Please note: When working with metals of any sort, proper precautions must be taken not only to prevent cuts from the sharp edges of these materials, but also protection from metal dust. When rubbing or cleaning metal panels, you should wear a dust mask and gloves. Keep metal away from food and food preparation areas. All materials should be sealed with lacquer or polyurethane before installation. Please do not allow these materials to be handled by children without the strict supervision of an adult. These craft materials are not intended for use by children under the age of 12.

Additional Tools & Accessories

For your convenience, we offer the tools listed here that may be hard-to-find elsewhere. They all are important for metal piercing projects.



Rawhide Mallets

To take most of the dents and curves out of your tin panels after punching, or to shape a lantern, the tool which has proven indispensable by tinsmiths through the years is the RAWHIDE MALLET. Rubber mallets leave dents on the metal, while rawhide does not.

Size 2 6 oz. \$22.35
Size 3 9 oz. \$25.00



Ball Pein Hammers

Having the right tool makes the job easier. And that's surely the case with these hammers. We've found this the best to use for this craft as the balance is far superior to a claw (or "carpenter's") hammer.

8 oz. \$ 14.50
12 oz. \$ 16.75

Abrasive Pads

Used for "bruising" the surface of the metal to prepare it for finishing and to polish without the chance of scratching the metal. These abrasive pads are without equal as they don't leave a film of oil on the metal as steel wool does.

Fine or ultrafine – 6"x 9"ea. \$ 2.25
(Please specify)

Cotton Gloves

For protection when working with metal, and most important, to keep from inadvertently "finger etching" the metal – resulting in permanent fingerprint marks on the raw metal which are all but impossible to remove.

Women's \$ 2.25 pair
Men's Regular \$ 2.25 pair
Men's Jumbo \$ 2.25 pair

Exclusive Pierced Tin Patterns by Country Accents®

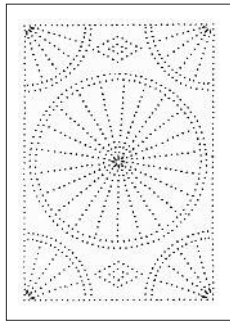
Patterns supplied in size listed only. Sorry, but we do not adjust do-it-yourself patterns to size.

These exclusive patterns represent many years collecting, designing and adapting motifs for punched tin. Many are based on traditional designs from Revere lanterns, pie safes and jam cupboard door panels, while others are based on folk designs of the Pennsylvania Dutch or European settlers. Some are just charming motifs to brighten your home.

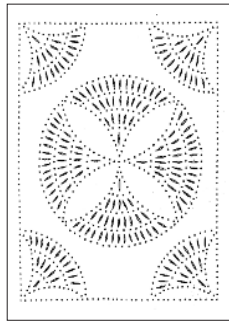
These paper patterns are designed to punch directly through onto the tin or other metal. With care, each pattern can be re-used two or three times. If you have more panels to do, order more patterns. We recommend using a new pattern if more than three panels are to be made. Most patterns are printed on approx. 11½" x 17" paper.

Recommended tools are listed with each Pattern. Tool list and prices are also in this booklet.

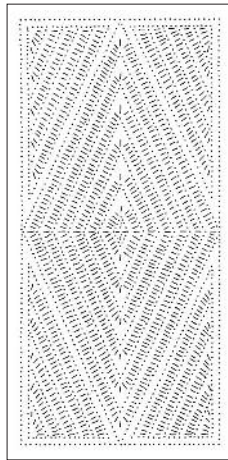
Sizes indicated with the pattern numbers are the size of the METAL PANEL (leaving room for a ¼" border all around). *EXAMPLE: Pattern #1001P is listed as 10" x 14", while the actual design measures 8½" x 12½" for the image.*



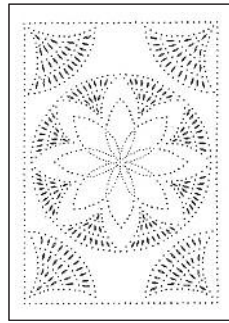
1001P, 10 x 14



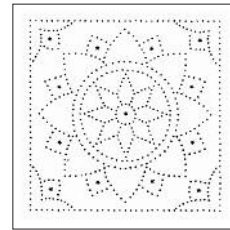
1002P, 10 x 14



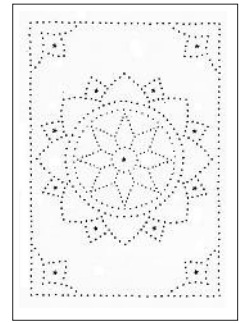
1003P, 12 x 24



1004P, 10 x 14

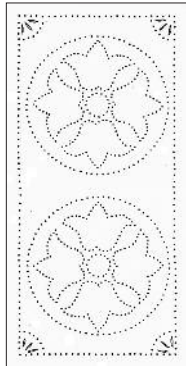


1005P, 10 x 10

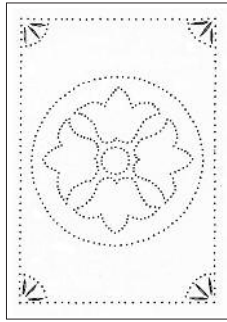


1005P, 10 x 14

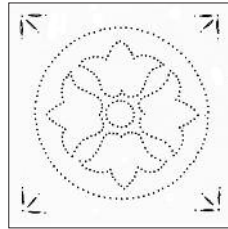
Many designs can be used vertically or horizontally!



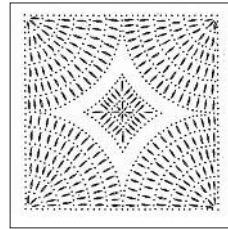
1006AP, 8 x 16



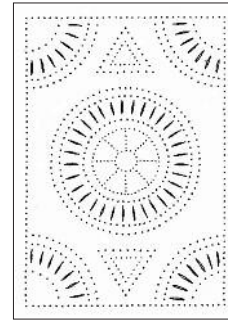
1006BP, 10 x 10



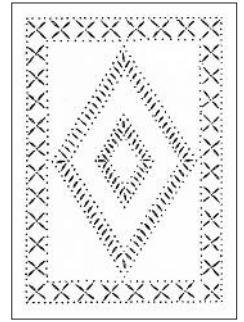
1006BP, 10 x 14



1007P, 10 x 10



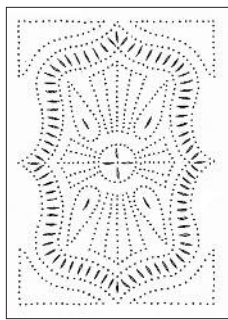
1008P, 10 x 14



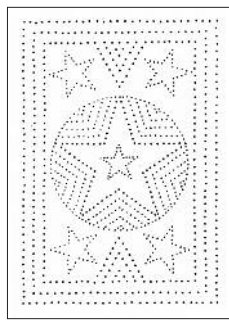
1009P, 10 x 14

* (not shown)

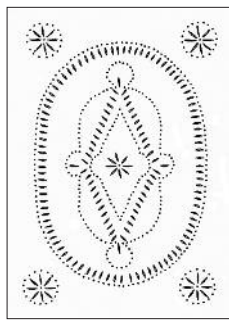
Pattern #	Description	Size	Tool	Tool	Tool	Tool	Price
1001P	Wagon Wheel	10 x 14	T-0159-3/32	T-0259-1/4			2.50
1001P	Wagon Wheel	12 x 24 *	T-0159-3/32	T-0259-1/4			4.50
1002P	Windmill	10 x 14	T-0159-1/16	T-0259-7/16			2.50
1002P	Windmill	12 x 24 *	T-0159-1/16	T-0259-7/16			4.50
1003P	Cut Diamond	12 x 24	T-0159-1/16	T-0259-7/16			4.50
1004P	Lacework #1	10 x 14	T-0359	T-0259-3/8			2.50
1005P	Marigold	10 x 10	T-0359	T-0759			2.00
1005P	Marigold	10 x 14	T-0359	T-0759			2.50
1005P	Marigold	12 x 24 *	T-0359	T-0759			4.50
1006P	Blue Bells	8 x 16	T-0159-3/32	T-0259-1/2			2.50
1006AP	Blue Bells	10 x 14	T-0159-3/32	T-0259-1/2			2.50
1006BP	Blue Bells	10 x 10	T-0159-3/32	T-0259-1/2			2.00
1007P	Small Diamond	10 x 10	T-0159-1/16	T-0259-7/16			2.00
1008P	Water Wheel	10 x 14	T-0359	T-0259-5/8			2.50
1009P	Diamond in Rough	10 x 14	T-0159-1/16	T-0259-3/8	T-0259-1/4		2.50
1010P	Traditional	10 x 14	T-0159-1/16	T-0259-7/16			2.50
1011P	Texas Star	10 x 14	T-0359				2.50



1010P, 10 x 14



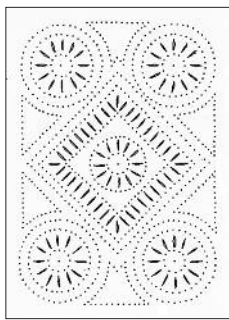
1011P, 10 x 14



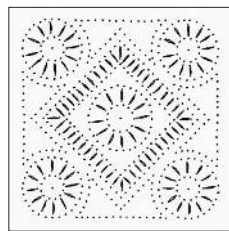
1012P, 10 x 14



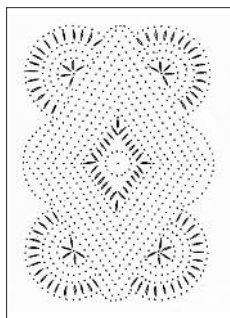
1013P, 10 x 14



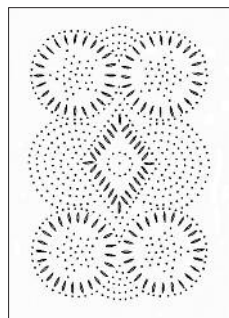
1017P, 10 x 14



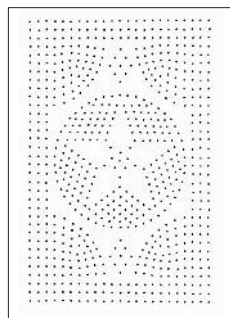
1017AP, 10 x 10



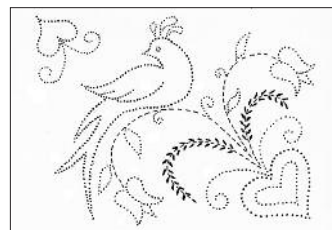
1018P, 10 x 14



1019P, 10 x 14



1020P, 10 x 14



1021P, 10 x 14



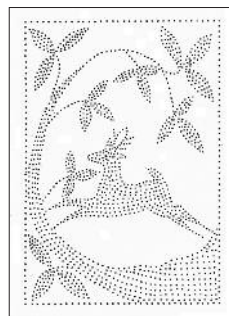
1022P (left), 12 x 16



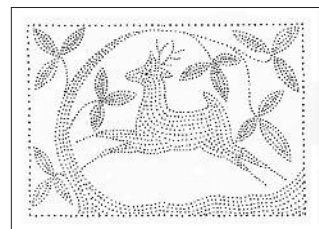
1022P (right), 12 x 16



1023P, 12 x 16



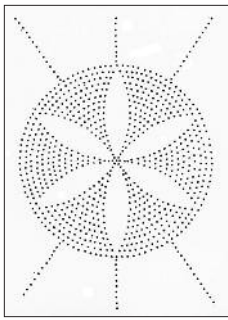
1024P, 10 x 14



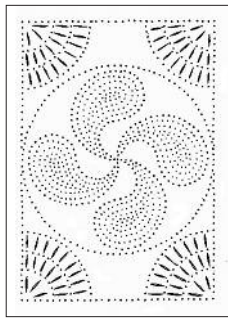
1025P, 14 x 10

** (not shown)*

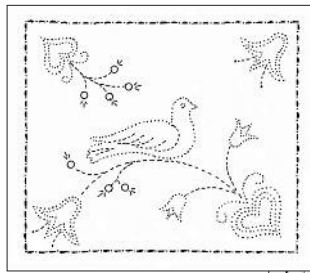
Pattern #	Description	Size	Tool	Tool	Tool	Tool	Price
1012P	Grannies Doily #1	14 x 10	T-0159-1/16	T-0259-1/4	T-0259-7/16		2.50
1013P	North Star	10 x 14	T-0159-1/16	T-0259-1/4			2.50
1013P	North Star	12 x 24 *	T-0159-1/16	T-0259-1/4			4.50
1017P	Primitive Geometric	10 x 14	T-0159-1/16	T-0259-7/16			2.50
1017AP	Primitive Geometric	10 x 10	T-0159-1/16	T-0259-7/16			2.00
1018P	Primitive Diamond 1	10 x 14	T-0159-1/16	T-0259-7/16			2.50
1019P	Primitive Diamond 2	10 x 14	T-0159-1/16	T-0259-7/16			2.50
1020P	T. Lincoln Pie Safe	10 x 14	T-0159-3/32				2.50
1021P	Distelfinks	14 x 10	T-0359	T-0259-Mini	T-1181		2.50
1022P	Bird on a Branch #1, L or R (ea.)	12 x 16	T-0359	T-0259-Mini	T-0259-7/16		3.00
1023P	Traditional Hearts & Tulips	12 x 16	T-0359	T-0259-7/16			3.00
1024P	Running Stag	10 x 14	T-0359				2.50
1025P	Running Stag	14 x 10	T-0359				2.50
1026P	Primitive Daisy	10 x 14	T-0159-1/16				2.50
1027P	Pinwheel	10 x 14	T-0159-1/16	T-0259-7/16			2.50
1028P	Single Doves, choose L or R	14 x 12	T-0359	T-0259-Mini	T-0659-1/4	T-2294-5/16	2.50
1028P	Single Doves, L and R	10 x 12	T-0359	T-0259-Mini	T-2294-5/16		4.50



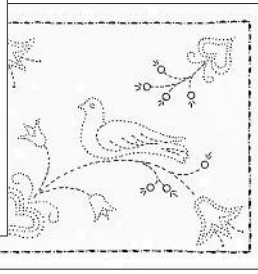
1026P, 10 x 14



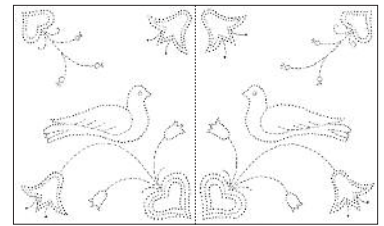
1027P, 10 x 14



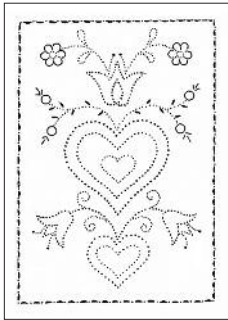
1028P (left), 14 x 12



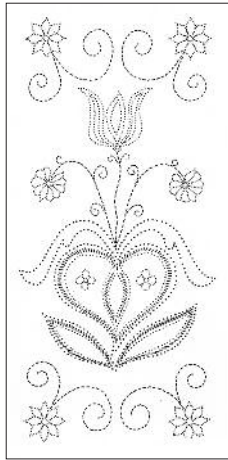
1028P (right), 14 x 12



1028P (10 x 12)
includes both L and R



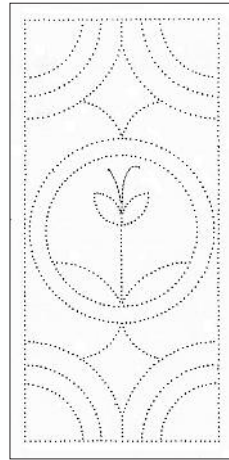
1030P, 10 x 14



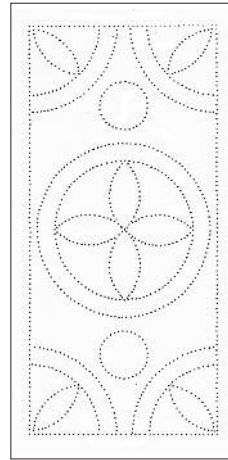
1032P, 12 x 24



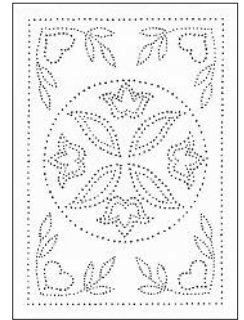
1033P, 8 x 24



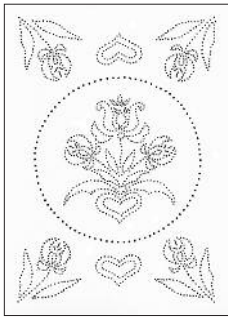
1034P, 12 x 24



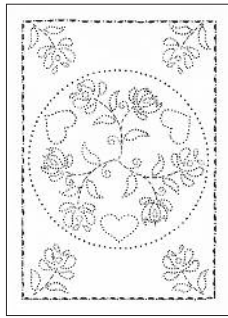
1035P, 12 x 24



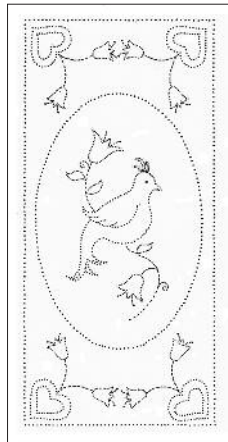
1036P, 10 x 14



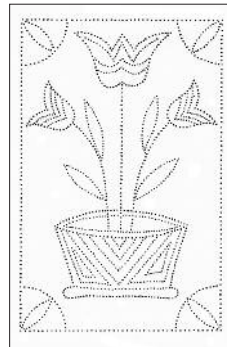
1037P, 10 x 14



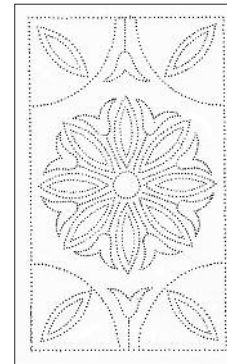
1038P, 10 x 14



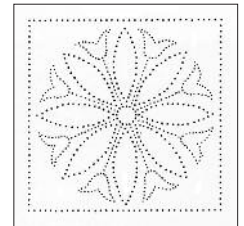
1039P, 12 x 24



1040P, 12 x 18



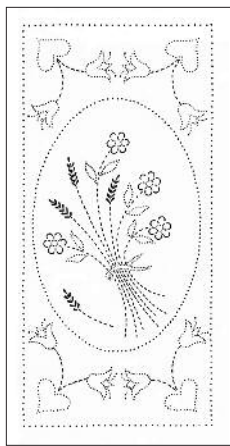
1041P, 12 x 20



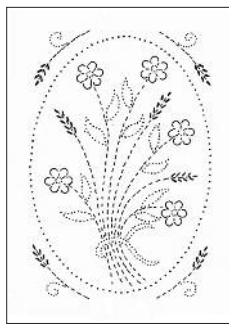
1041P, 10 x 10

* (not shown)

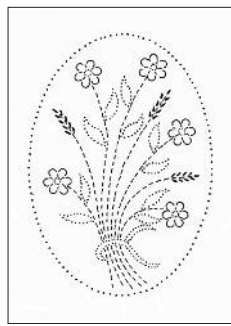
Pattern #	Description	Size	Tool	Tool	Tool	Tool	Price
1030P	Folk Art #3	10 x 14	T-0359	T-0259-Mini T-0459-5/16	T-0659-1/4 T-1983	T-2294-5/16	2.50
1030P	Folk Art #3	12 x 24 *	T-0359	T-0259-Mini T-0459-5/16	T-0659-1/4 T-1983	T-0459-1/4 T-2294-5/16	4.50
1032P	Flowering Heart	12 x 24	T-0359	T-0259-Mini	T-0659-1/4	T-0459-1/4	4.50
1033P	Folk Art #2	8 x 24	T-0359	T-0259-Mini			4.50
1034P	Tulip Hex	12 x 24	T-0159-3/32				4.50
1035P	Rosette Hex	12 x 24	T-0159-3/32				4.50
1036P	Dutch Plate #1	10 x 14	T-0359				2.50
1036P	Dutch Plate #1	12 x 24 *	T-0359				4.50
1037P	Dutch Plate #2	14 x 22 *	T-0359	T-0259-Mini			4.50
1037P	Dutch Plate #2	10 x 14	T-0359	T-0259-Mini			2.50
1038P	Dutch Plate #3	14 x 22 *	T-0359	T-0259-Mini			4.50
1038P	Dutch Plate #3	10 x 14	T-0359	T-0259-Mini			2.50
1039P	Bird in Oval	12 x 24	T-0359	T-0259-Mini			4.50
1040P	Tulip Bowl	12 x 18	T-0359				4.50
1041P	Primitive Tulip	10 x 10	T-0359				2.00
1041P	Primitive Tulip	12 x 20	T-0359				4.50



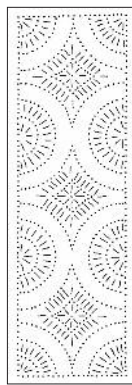
1042P, 12 x 24



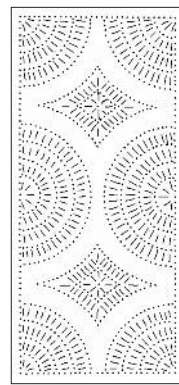
1042AP, 10 x 14



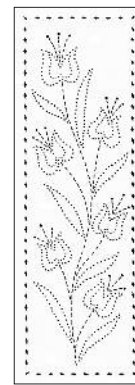
1042BP, 10 x 14



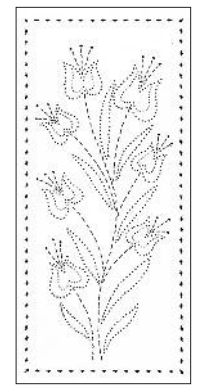
1046P
7.5 x 18



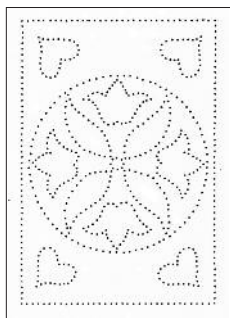
1046P
8.5 x 18



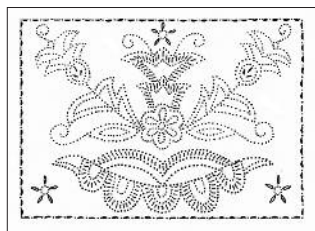
1047P
7.5 x 18



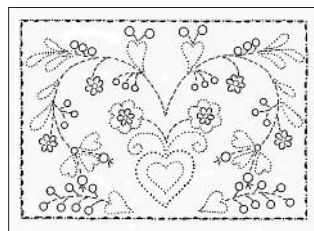
1047P
8.5 x 18



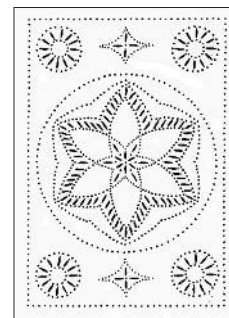
1049P, 10 x 14



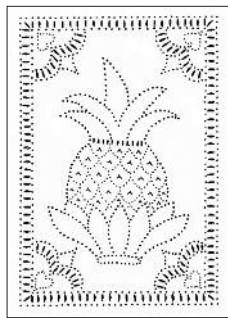
1050P, 14 x 10



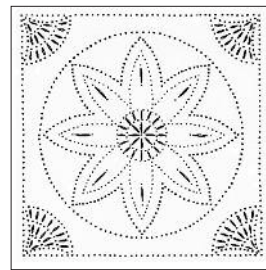
1051P, 14 x 10



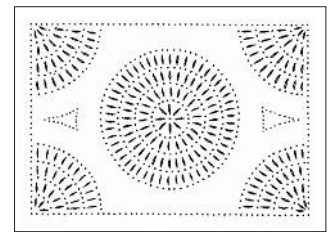
1052P, 10 x 14



1054P, 10 x 14



1056P, 12 x 12

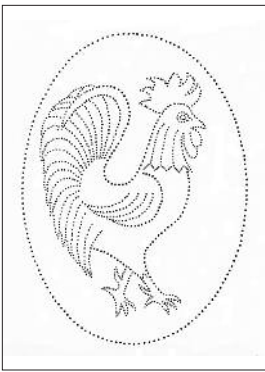


1057P, 14 x 10

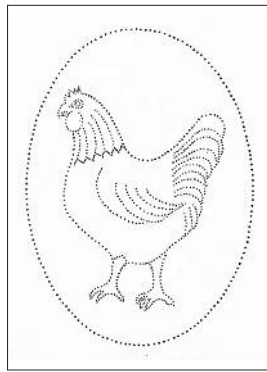
Many designs
can be used vertically
or horizontally!

* (not shown)

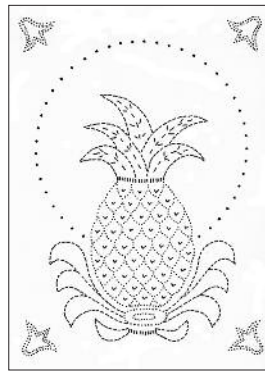
Pattern #	Description	Size	Tool	Tool	Tool	Tool	Price
1042P	Wheat Flower	12 x 24	T-0359	T-0259-Mini	T-0459-3/8	T-1181	4.50
1042AP	Wheat Flower	10 x 14	T-0359	T-0259-Mini	T-0459-5/16	T-1181	2.50
1042BP	Wheat Flower	10 x 14	T-0359	T-0259-Mini	T-0459-5/16	T-1181	2.50
1046P	Diamond K2B Pattern	7½ x 18	T-0159-1/16	T-0259-7/16			3.00
1046P	Diamond K2B Pattern	8½ x 18	T-0159-1/16	T-0259-7/16			3.00
1047P	Wild Tulips K2B Pattern	7½ x 18	T-0359	T-0259-Mini	T-1783		3.00
1047P	Wild Tulips K2B Pattern	8½ x 18	T-0359	T-0259-Mini	T-1783		3.00
1049P	Dutch Tulip	10 x 14	T-0359				2.50
1050P	Folk Art #1	14 x 10	T-0359	T-0259-Mini	T-0659-1/4	T-1983	2.50
1051P	Flowering Heart #2	14 x 10	T-0359	T-0259-Mini	T-0659-1/4	T-0459-1/5	2.50
				T-2294-1/4	T-2294-5/16		2.50
1052P	Lace & Wheels	10 x 14	T-0359	T-0259-1/4	T-0259-3/8		2.50
1054P	Pineapple #2	10 x 14	T-0359	T-0259-Mini	T-1081		2.50
1056P	Lacework #9	12 x 12	T-0359	T-0259-Mini	T-0259-3/8	T-0259-1/2	2.50
1057P	Sunburst	10 x 14	T-0159-3/32	T-0259-7/16			2.50
1057P	Sunburst	12 x 24 *	T-0159-3/32	T-0259-7/16			4.50
1061P	Rooster	12 x 16	T-0359	T-0259-Mini			3.00
1061P	Rooster	18 x 24 *	T-0359	T-0259-Mini			4.50



1061P, 12 x 16



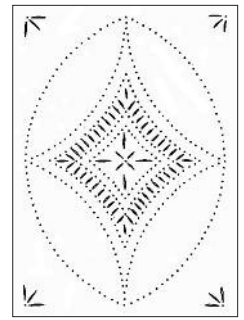
1062P, 12 x 16



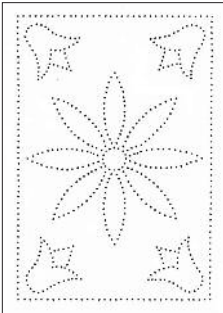
1063P, 12 x 16



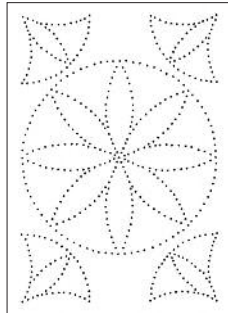
1064P, 10 x 14



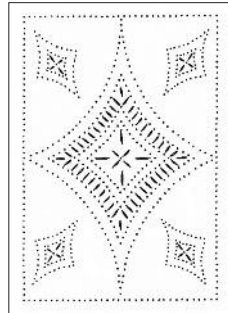
1065P, 10 x 14



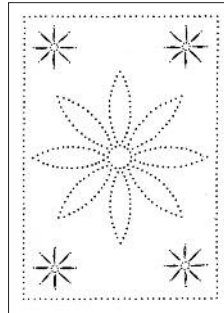
1066P, 10 x 14



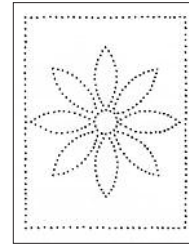
1067P, 10 x 14



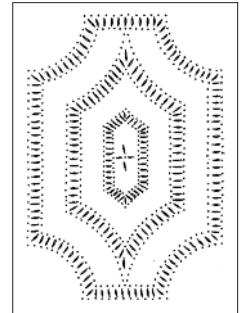
1068P, 10 x 14



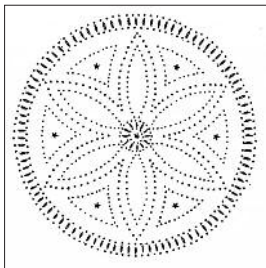
1070P, 10 x 14



1070P, 8 x 10



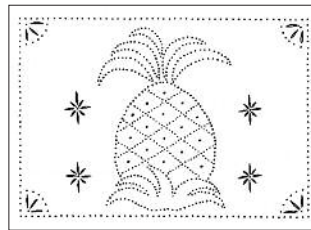
1071P, 10 x 14



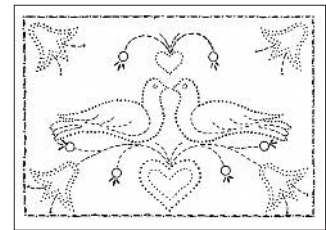
1074P, 12 x 12



1075P, 9 x 12



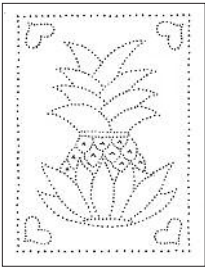
1077P, 14 x 10



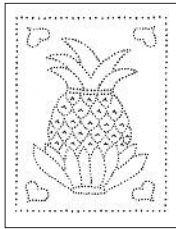
1080P, 14 x 10

* (not shown)

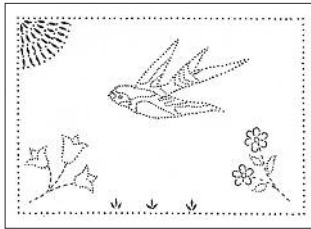
Pattern #	Description	Size	Tool	Tool	Tool	Tool	Price
1062P	Hen	12 x 16	T-0359	T-0259-Mini			3.00
1062P	Hen	18 x 24 *	T-0359	T-0259-Mini			4.50
1063P	Pineapple Queen	16 x 24	T-0359	T-0259-Mini	T-0759	T-1081	4.50
1064P	Hearts in Spring	10 x 14	T-0359	T-0259-1/4	T-0259-7/16	T-0559-1/2	2.50
1065P	Diamond #2	10 x 14	T-0159-1/16	T-0259-3/8	T-0259-1/2		2.50
1066P	Tulips & Daisy	10 x 14	T-0159-1/16				2.50
1067P	Daisy #2	10 x 14	T-0159-3/32				2.50
1068P	Five Diamonds	10 x 14	T-0359	T-0259-1/4	T-0259-1/2		2.50
1070P	Five Flowers	8 x 10	T-0359				1.50
1070P	Five Flowers	10 x 14	T-0359	T-0259-5/8			2.50
1071P	Raised Panel	10 x 14	T-0359	T-0259-1/4	T-0259-3/8		2.50
1074P	Double Rosette	12 x 12	T-0359	T-0259-Mini	T-0259-1/4	T-0759	2.50
1075P	Pineapple Welcome	9 x 12	T-0359	T-0259-7/16	T-1081		2.00
1077P	Pineapple Primitive	14 x 10	T-0359	T-0259-1/4	T-0259-7/16		2.50
1080P	Pair of Doves	14 x 10	T-0359	T-0259-Mini	T-0659-1/4	T-2294-5/16	2.50
1080P	Pair of Doves	18 x 14 *	T-0359	T-0259-Mini	T-0659-1/4	T-2294-5/16	2.50
1080P	Pair of Doves	14 x 12	T-0359	T-0259-Mini	T-0659-1/4	T-2294-5/16	3.50



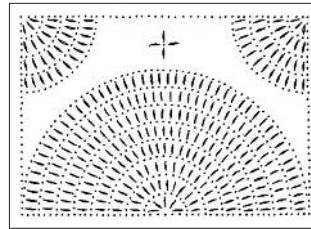
1082P, 9 x 12



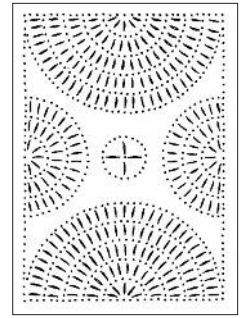
1083P, 8 x 10



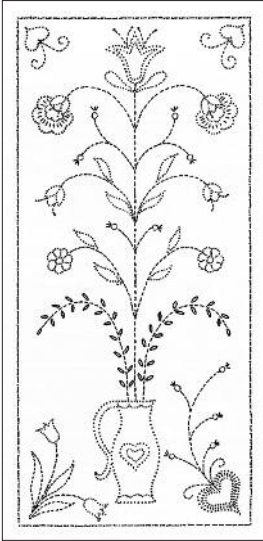
1085P, 14 x 10



1087P, 14 x 10



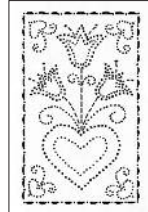
1088P, 10 x 14



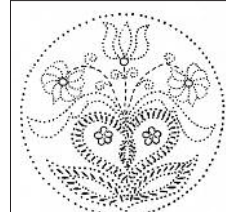
1089P, 12 x 24



1091P, 10 x 14



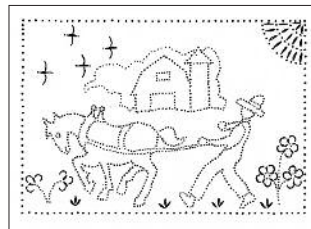
1091P, 6 x 9



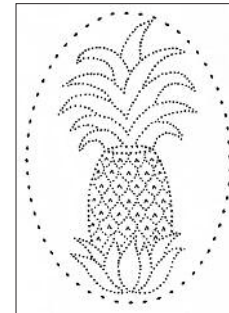
1092P, 10 x 10



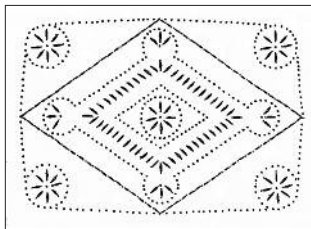
1093P, 14 x 10



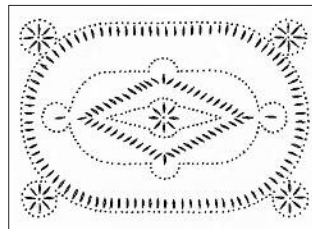
1094P, 14 x 10



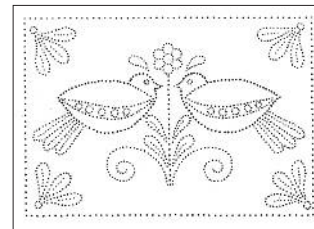
1095P, 10 x 14



1100P, 14 x 10



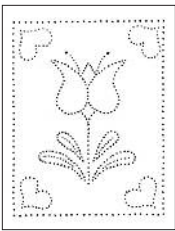
1101P, 14 x 10



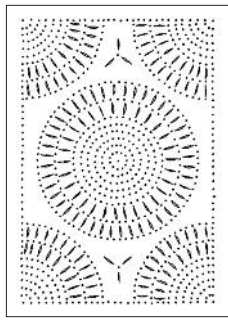
1102P, 14 x 10

* (not shown)

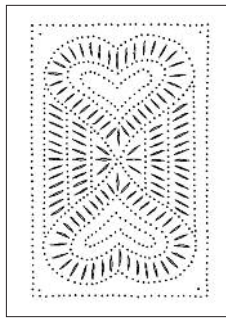
Pattern #	Description	Size	Tool	Tool	Tool	Tool	Price
1082P	Pineapple #3	9 x 12	T-0359	T-1081			2.00
1083P	Pineapple Mini	8 x 10	T-0359	T-1081			1.50
1085P	Barn Swallow	14 x 10	T-0359	T-0259-Mini	T-0259-1/4	T-0459-1/4	2.50
1087P	Rising Sun	14 x 10	T-0159-1/16	T-0259-7/16			2.50
1088P	4 Way Sunrise	14 x 10	T-0159-1/16	T-0259-7/16			2.50
1088P	4 Way Sunrise	12 x 24 *	T-0159-1/16	T-0259-7/16			4.50
1089P	Folk Art #4	12 x 24	T-0359	T-0259-Mini	T-0659-1/4	T-1983	4.50
1091P	Mini Folk Art #4	6 x 9	T-0359	T-0259-Mini			1.50
1091P	Mini Folk Art #4	10 x 14	T-0359	T-0259-Mini			2.50
1092P	Flowering Heart #3	10 x 10	T-0359	T-0259-Mini	T-0459-1/4	T-2294-1/4	2.00
1093P	Partridge	14 x 10	T-0359	T-0259-Mini	T-0659-1/4	T-2294-5/16	2.50
1094P	Farmer	14 x 10	T-0359	T-0259-Mini	T-0259-3/8	T-0459-1/4	2.50
1095P	Pineapple in Oval	10 x 14	T-0359	T-1081	T-1783		2.50
1100P	Grannies Doily #2	14 x 10	T-0159-1/16	T-0259-7/16			2.50
1101P	Grannies Doily #3	14 x 10	T-0159-1/16	T-0259-1/4	T-0259-7/16		2.50
1102P	Loving Birds	14 x 10	T-0359				2.50



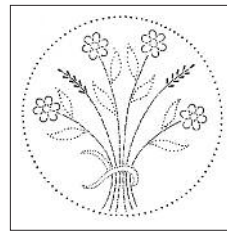
1103P, 8 x 10



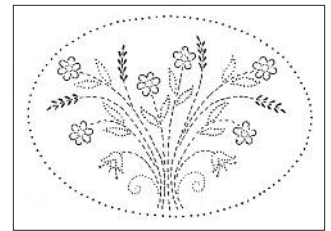
1104P, 10 x 14



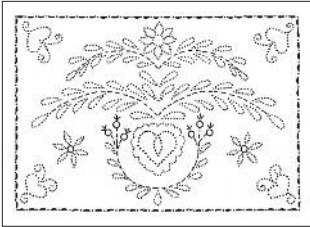
1105P, 10 x 14



1108P, 10 x 10



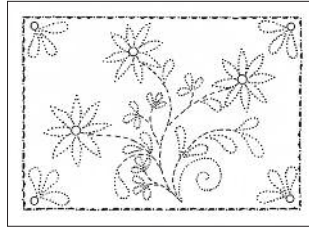
1108P, 14 x 10



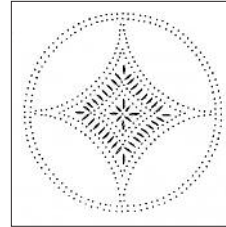
1124P, 14 x 10



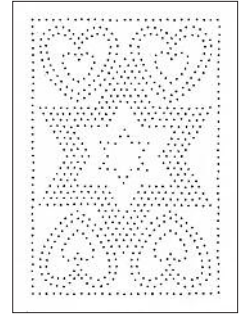
1125P, 10 x 14



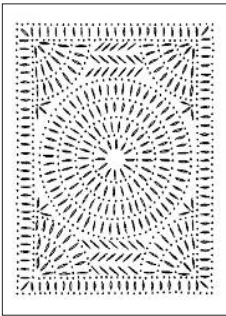
1127P, 14 x 10



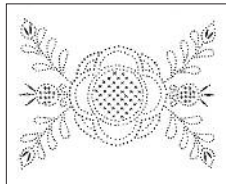
1131P, 10 x 10



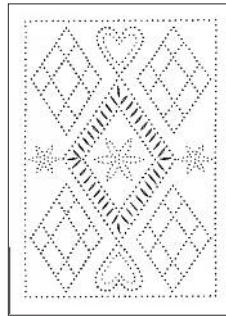
1132P, 10 x 14



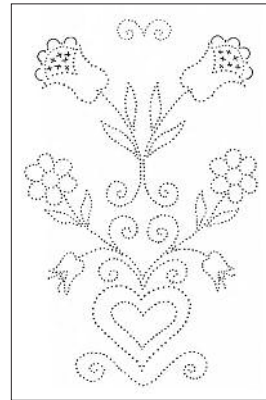
1135P, 10 x 14



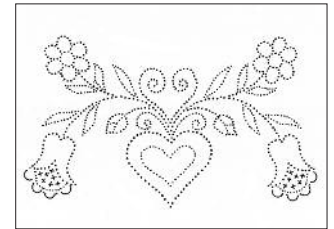
1138P, 10 x 8



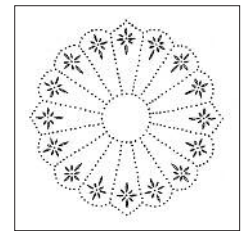
1142P, 10 x 14



1143P, 12 x 20



1144P, 14 x 10

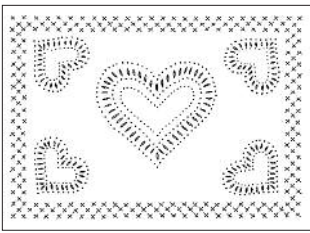


1150P, 10 x 10

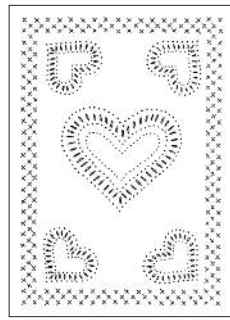
Many designs
can be used vertically
or horizontally!

* (not shown)

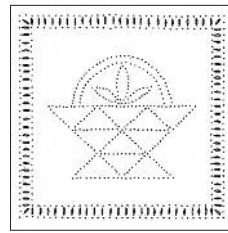
Pattern #	Description	Size	Tool	Tool	Tool	Tool	Price
1103P	Tulip with Hearts	8 x 10	T-0359				2.00
1104P	Footwarmer #1	10 x 14	T-0159-1/16	T-0259-7/16			2.50
1105P	Footwarmer #2	10 x 14	T-0159-1/16	T-0259-7/16			2.50
1108P	Wheat Flower Bouquet	10 x 10	T-0359	T-0259-Mini	T0459-5/16	T-1181	2.00
1108P	Wheat Flower Bouquet	14 x 10	T-0359	T-0259-Mini	T0459-5/16	T-1181	2.50
1124P	Folk Art #5	14 x 10	T-0359	T-0259-Mini	T-0659-1/4	T-2294-1/4	2.50
1125P	Strawberries	10 x 14	T-0359	T-0659-1/4			2.50
1127P	Clematis	14 x 10	T-0359	T-0259-Mini	T-0659-1/4	T-2294-1/4	2.50
1131P	Diamond in Circle	10 x 10	T-0359	T-0259-1/4	T-0259-7/16		2.50
1132P	Sixpoint Star & Hearts	10 x 14	T-0159-3/32				2.50
1135P	Sunburst w/Chisel Border #1	10 x 14	T-0159-1/16	T-0259-7/16			2.50
1138P	Country Collection #2	10 x 8	T-0359	T-0259-3/8	T-0859-1/4		2.00
1138P	Country Collection #2	12 x 8 *	T-0359	T-0259-3/8	T-0859-1/4		2.50
1142P	Diamonds & Hearts	10 x 14	T-0159-3/32	T-0129-1/8	T-1259-7/16		2.50
1143P	Hearts & Flowers #1	12 x 20	T-0359	T-0459-3/8	T-0859-1/4		4.50
1144P	Hearts & Flowers #2	14 x 10	T-0359	T-0459-3/8	T-0859-1/4		2.50
1150P	Dresden Plate	10 x 10	T-0359	T-0259-1/4	T-0259-3/8	T-0259-1/2	2.00



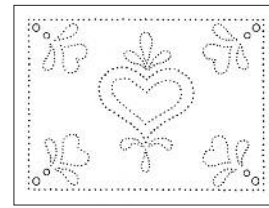
1154P, 14 x 10



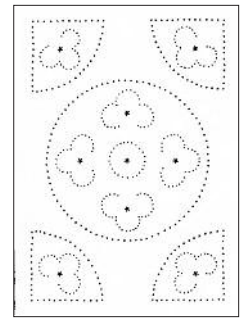
1157P, 10 x 14



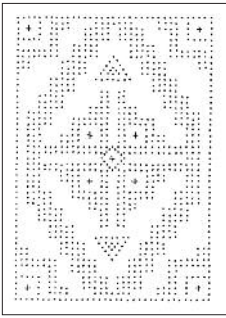
1162P, 10 x 10



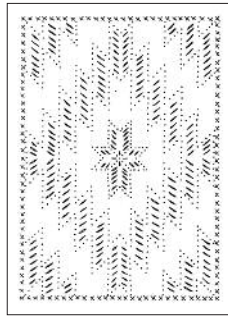
1173P, 12 x 9



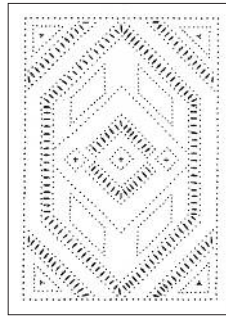
1174P, 10 x 14



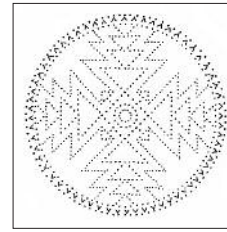
1175P, 10 x 14



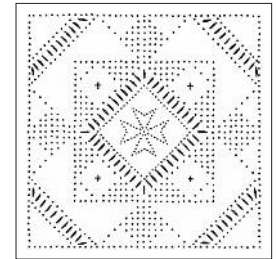
1177P, 10 x 14



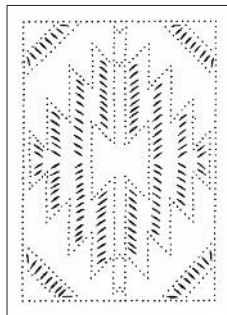
1178P, 10 x 14



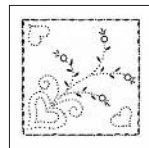
1184P, 10 x 10



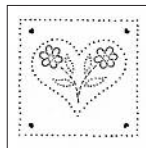
1185P, 12 x 12



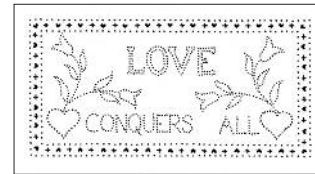
1186P, 10 x 14



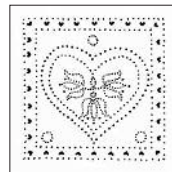
1188P, 6 x 6



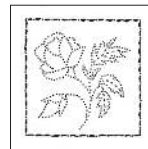
1189P, 6 x 6



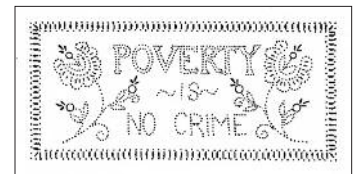
1192P, 14 x 7.5



1190P, 7 x 7



1191P, 6 x 6

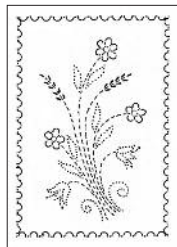


1193P, 15 x 7.5

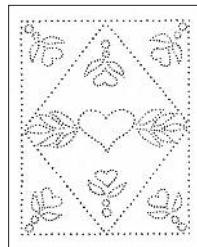
Pattern #	Description	Size	Tool	Tool	Tool	Tool	Price
1154P	Five Hearts #1	14 x 10	T-0359	T-0259-1/4	T-0259-3/8	T-0859-1/4	2.50
1157P	Five Hearts #2	10 x 14	T-0359	T-0259-1/4	T-0259-3/8	T-0859-1/4	2.50
1162P	Quilt Basket	10 x 10	T-0359	T-0259-1/4			2.00
1173P	Lady's Favorite	12 x 9	T-0359	T-2294-3/8	T-2294-5/16		2.50
1174P	Primrose	10 x 14	T-0359	T-0759			2.50
1175P	South West #1	10 x 14	T-0159-1/16	T-0859-1/4			2.50
1177P	South West #2	10 x 14	T-0359	T-0259-1/4	T-0259-7/16	T-0859-1/4	2.50
1178P	South West #3	10 x 14	T-0359	T-0259-1/4	T-0859-1/4	T-0959	2.50
1184P	South West #4	10 x 10	T-0359	T-1081			2.00
1185P	South West #5	12 x 12	T-0359	T-0259-7/16	T-0859-3/8		2.50
1186P	South West #6	10 x 14	T-0159-1/16	T-0259-Mini	T-0259-1/2		2.50
1188P	Mini Folk Art #1	6 x 6	T-0359	T-0259-Mini	T-0659-1/4	T-2294-5/16	1.50
1189P	Mini Folk Art #2	6 x 6	T-0359	T-0259-Mini	T-0459-5/16	T-1583	1.50
1190P	Mini Folk Art #3	7 x 7	T-0359	T-1583			1.50
1191P	Rose	6 x 6	T-0359	T-0259-Mini			1.50
1192P	Love Conquers All	14 x 7½	T-0359	T-1583	T-1883		2.50
1193P	Poverty is No Crime	15 x 7½	T-0359	T-0259-Mini	T-2294-5/16	T-2294-1/4	2.50



1194P, 15 x 8



1195P, 8 x 11



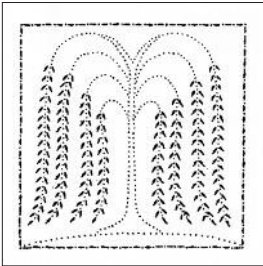
1196P, 9 x 11



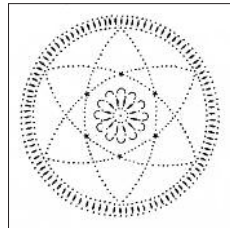
1197P, 10 x 12



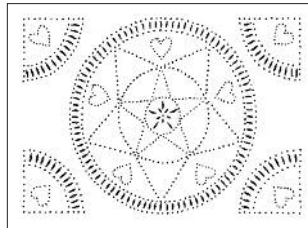
1198P, 10 x 15



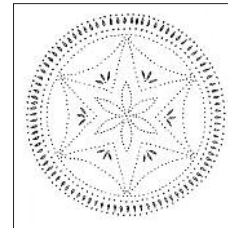
1199P, 12 x 12



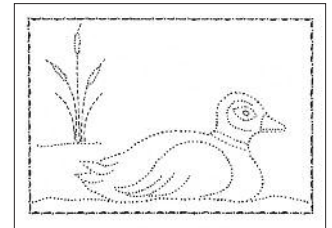
1200P, 10 x 10



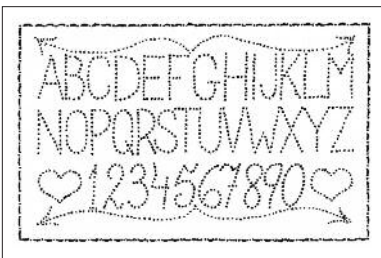
1201P, 14 x 10



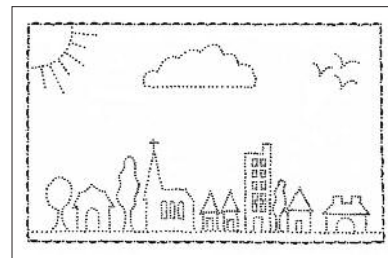
1202P, 10 x 10



1203P, 14 x 10



1204P, 16 x 12



1205P, 16 x 12



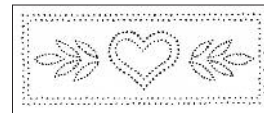
1206P, 14 x 11



1207P, 11 x 14



1208P, 14 x 11



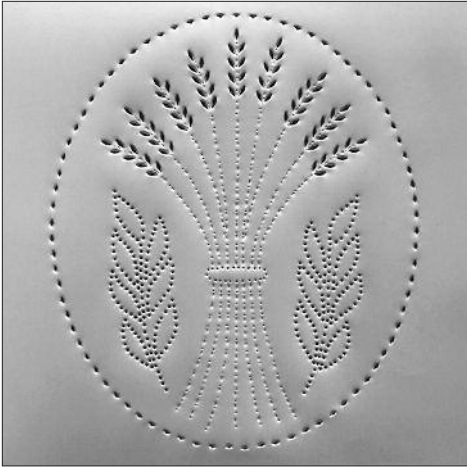
1215P, 12 x 5

Pattern #	Description	Size	Tool	Tool	Tool	Tool	Price
1194P	Make Mine Country	15 x 8	T-0359	T-0259-Mini T-0459-5/16	T-0659-1/4 T-1181	T-0459-1/4	2.50
1195P	Country Bouquet	8 x 11	T-0359	T-0259-Mini	T-0459-5/16	T-1181	2.00
1196P	Seven Hearts	9 x 11	T-0359				2.50
1197P	Friends are Forever	10 x 12	T-0359	T-0659-1/4			2.50
1198P	Peace and Plenty	10 x 15	T-0359				2.50
1199P	Willow Tree	12 x 12	T-0359	T-0259-1/4	T-1181		2.50
1200P	Stars and Flower	10 x 10	T-0359	T-0259-1/4	T-0459-5/16	T-0759	2.00
1201P	Star and Hearts	14 x 10	T-0359	T-0259-Mini	T-0259-1/4		2.50
1202P	Six Point Star w/ Sparkles	10 x 10	T-0359	T-0259-3/8	T-1181		2.00
1203P	Duck in Pond	14 x 10	T-0359	T-0259-Mini	T-0659-1/4		2.50
1204P	ABC Sampler	16 x 12	T-0359	T-0259-Mini			2.50
1205P	Our Town	16 x 12	T-0359	T-0259-Mini			2.50
1206P	Home Sweet Home	14 x 11	T-0359	T-0659-1/4			2.50
1207P	Bless This House	11 x 14	T-0359	T-0259-Mini T-0659-1/4	T-0459-1/4 T-0759	T-0559-1/2	2.50
1208P	Welcome Friends	14 x 11	T-0359	T-0659-1/4			2.50
1215P	Hearts with Leaves	12 x 5	T-0359				2.00

Ready-to-Install Stock Panels

These in-stock, hand-punched metal panels are beautifully crafted in Tin Plate and are **available for quick shipping!** These panels are crafted with care from the same quality material as our custom panels and are finished with a clear protective coating.

- Please note:
- For large quantities, please check for available stock.
 - All panels are shipped with mounting and care instructions.
 - All designs are set in 3/4" from the edge of the metal.



RPS 1176-A

As one of our most popular designs ever, we can now offer this design as a **Ready-to-Install Panel, in-stock and available for 'quick-ship!'**

It is available in a wide variety of size, as listed below.

The panels shown at right illustrate how the proportions of the design change to fit the overall width and height of the finished panel.

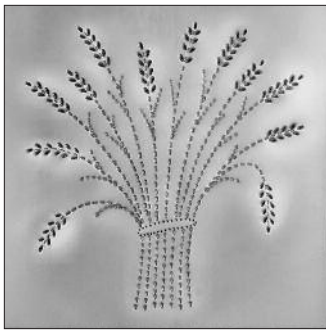
See more of our Ready-to-Install Stock panels – shown on the following page.



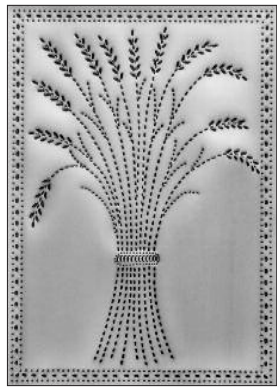
(frames not included)

* All items over 12" will require additional S/H charges. Please call or email for prices.

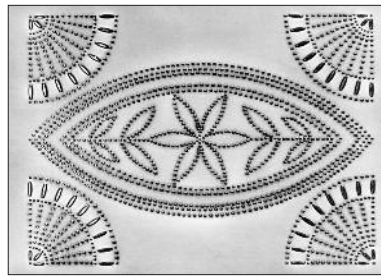
RPS 1176-A			RPS 1176-A			RPS 1176-A			RPS 1176-A		
Panel Width	Panel Height	Price Per Insert	Panel Width	Panel Height	Price Per Insert	Panel Width	Panel Height	Price Per Insert	Panel Width	Panel Height	Price Per Insert
9¼"	6¾"	\$ 9.00	* 6¼"	24¾"	\$ 23.00	* 10¾"	36¾"	\$ 49.00	* 7½"	25½"	\$ 26.85
12¼"	6¾"	12.00	* 7¾"	24¾"	24.00	* 12¼"	36¾"	58.10	* 9¼"	25½"	31.50
9¼"	9¾"	13.00	* 7¼"	24¾"	26.15	* 15½"	36¾"	69.50	* 10½"	25½"	36.85
10¾"	9¾"	15.30	* 8¾"	24¾"	30.30	10½"	7½"	11.85	* 12"	25½"	41.85
12¼"	9¾"	17.50	* 9¼"	24¾"	31.20	13½"	7½"	15.15	* 13½"	25½"	44.75
6¼"	12¾"	12.00	* 10¾"	24¾"	36.15	10½"	10½"	15.25	* 15"	25½"	50.00
7¾"	12¾"	14.00	* 12¼"	24¾"	40.00	12"	10½"	19.00	* 16½"	25½"	54.75
7¼"	12¾"	14.50	* 13¾"	24¾"	42.50	13½"	10½"	21.25	* 7½"	31½"	29.50
8¾"	12¾"	16.80	* 15¼"	24¾"	44.50	7½"	13½"	15.00	* 9¼"	31½"	36.85
9¼"	12¾"	17.30	* 6¼"	30¾"	26.25	9¼"	13½"	18.15	* 10½"	31½"	42.25
10¾"	12¾"	20.15	* 7¾"	30¾"	28.15	10½"	13½"	20.90	* 12"	31½"	49.00
* 12¼"	12¾"	23.00	* 7¼"	30¾"	28.75	* 12"	13½"	23.75	* 13½"	31½"	52.50
* 15¼"	12¾"	28.00	* 8¾"	30¾"	33.75	* 13½"	13½"	26.25	* 16½"	31½"	59.40
* 6¼"	18¾"	17.60	* 9¼"	30¾"	36.25	* 16½"	13½"	31.25	* 7½"	37½"	37.25
* 7¾"	18¾"	21.00	* 10¾"	30¾"	40.00	* 7½"	19¾"	22.50	* 9¼"	37½"	44.00
* 7¼"	18¾"	21.25	* 12¼"	30¾"	46.60	* 9¼"	19¾"	26.85	* 10½"	37½"	50.00
* 8¾"	18¾"	25.30	* 15¼"	30¾"	57.50	* 10½"	19¾"	31.00	* 12"	37½"	44.00
* 9¼"	18¾"	26.60	* 6¼"	36¾"	30.80	* 12"	19¾"	33.15	* 13½"	37½"	61.25
* 10¾"	18¾"	30.90	* 7¾"	36¾"	36.50	* 13½"	19¾"	41.25	* 16½"	37½"	71.25
* 12¼"	18¾"	33.50	* 7¼"	36¾"	36.50	* 15½"	19¾"	44.35	* 13½"	16½"	31.25
* 13¾"	18¾"	39.00	* 8¾"	36¾"	41.00	* 16½"	19¾"	47.25	* 10½"	16½"	27.25
* 15¼"	18¾"	40.50	* 9¼"	36¾"	42.50						



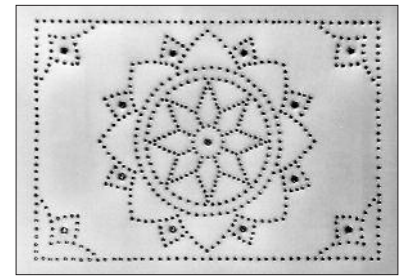
RPS 1250
 12" x 12" \$26.90
 10" x 10" \$18.90



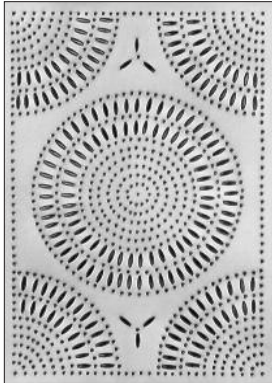
RPS 1169
 10" x 14" shown \$25.00
 14" x 10" \$25.00



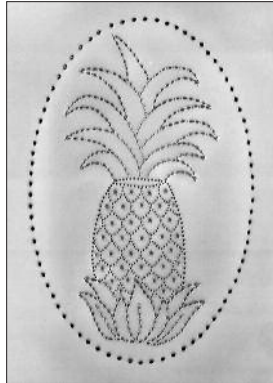
RPS 1244
 14" x 10" \$25.00



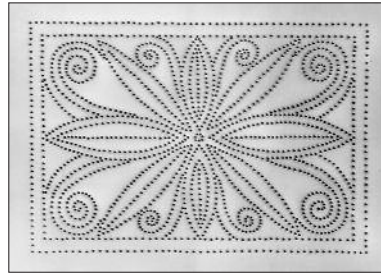
RPS 1005
 14" x 10" \$22.50
 10" x 10" \$16.95



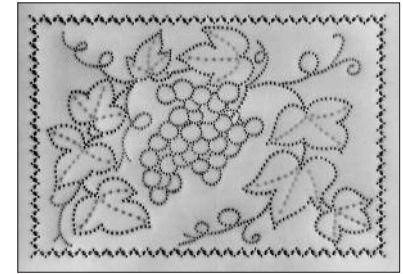
RPS 1104
 10" x 14" \$25.00



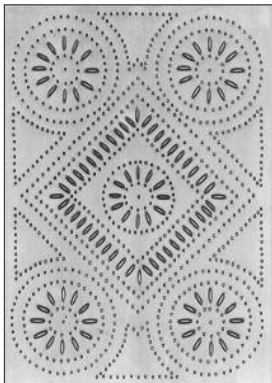
RPS 1095
 10" x 14" \$25.00



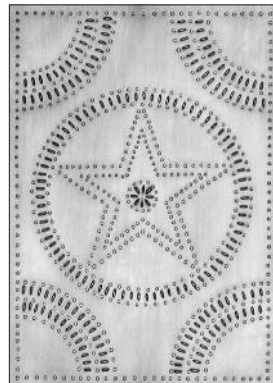
RPS 1073
 14" x 10" \$25.00



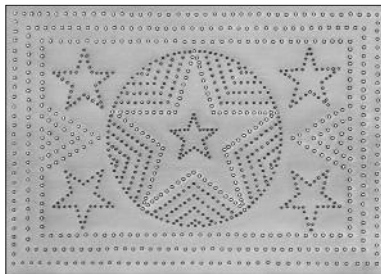
RPS 1212
 10" x 14" \$25.00
 14" x 10" shown \$26.50



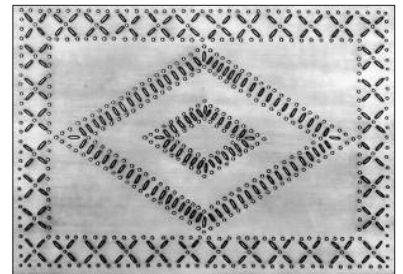
RPS 1017
 10" x 14" \$25.00



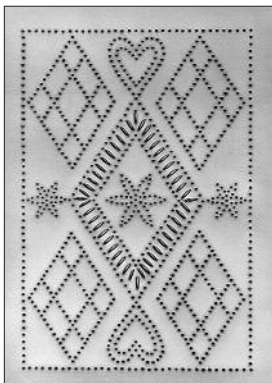
RPS 1013
 10" x 14" \$22.50
 10" x 10" \$18.00



RPS 1011
 14" x 10" shown \$22.50
 10" x 14" \$22.50



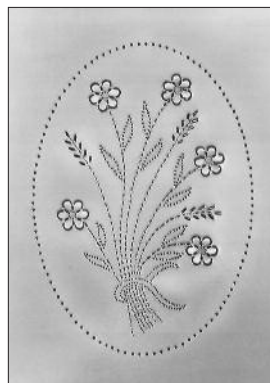
RPS 1009
 14" x 10" \$25.00



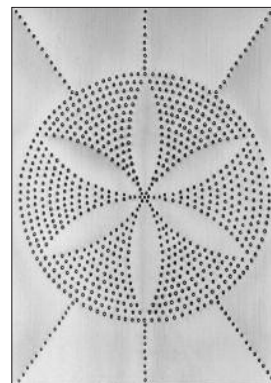
RPS 1142
 10" x 14" \$22.50



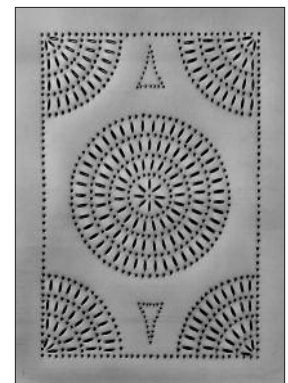
RPS 1068
 10" x 14" \$22.50



RPS 1042-B
 10" x 14" \$25.00



RPS 1026
 10" x 14" \$25.00



RPS 1057
 10" x 14" \$25.00

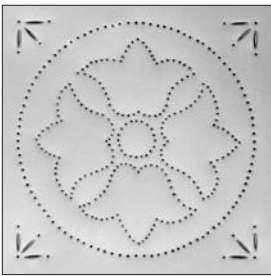
Minor specifications subject to change without notice.

Designs pictured here, as they appear or modified, or sold as patterns, finished goods, or in kits are the property of Country Accents®, and are copyright protected. They are intended for use in craft projects by individuals. The unauthorized copying or modification of these designs by any means for the purpose of distribution or resale is expressly forbidden. Fraudulent use of these designs either as shown or modified will be prosecuted to the full extent of the law. All Rights Reserved © 1988.

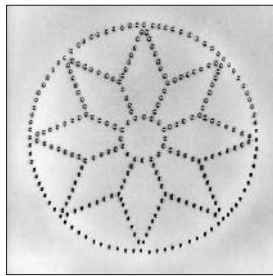
Ready Punch™ Economy Panels

Beautifully crafted in Tin Plate. Country Accents® has created this Ready Punch™ Economy line of in-stock, hand-punched metal panels for economy-minded individuals. Simply apply a finish coating (instructions supplied) to protect the beautiful luster. These panels are crafted with care from the same quality material as our custom panels.

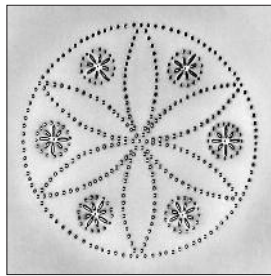
- Please note:*
- For large quantities, please check for available stock.
 - All panels are shipped with finishing, mounting and care instructions.
 - All designs are set in 3/4" from the edge of the metal.



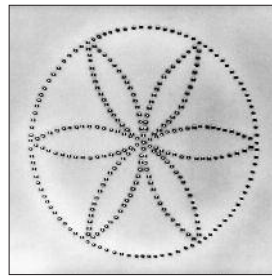
RPE 1006B
10" x 10" \$10.95



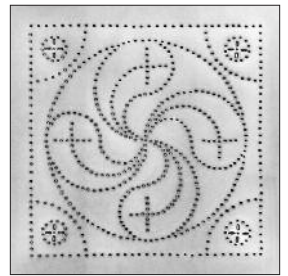
RPE 1224
12" x 12" \$13.50
10" x 10" \$9.95



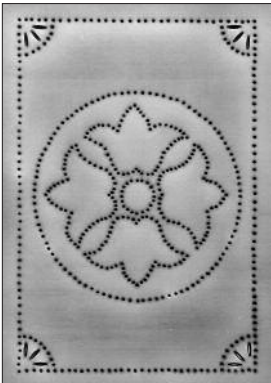
RPE 1225
10" x 10" \$12.00



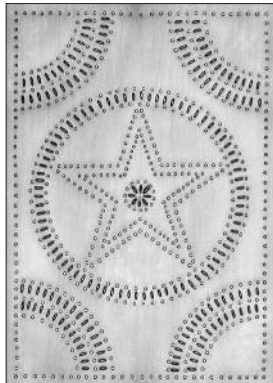
RPE 1226
10" x 10" \$9.95



RPE 1238
12" x 12" shown \$13.50
10" x 14" \$13.50



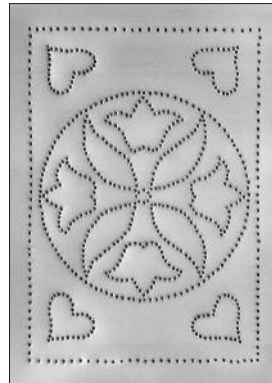
RPE 1006A
10" x 14" \$13.50



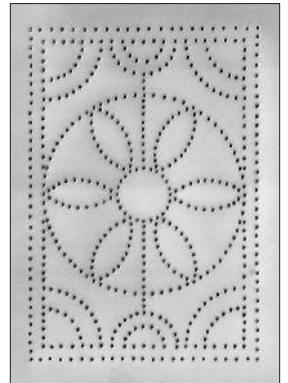
RPE 1013
10" x 14" \$14.95
10" x 10" \$13.50



RPE 1030
10" x 14" \$14.95



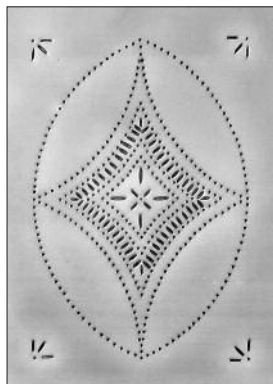
RPE 1049
10" x 10" \$9.95
10" x 14" \$12.50
12" x 12" \$12.50



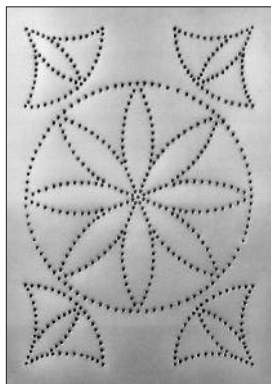
RPE 1053
10" x 14" \$12.50



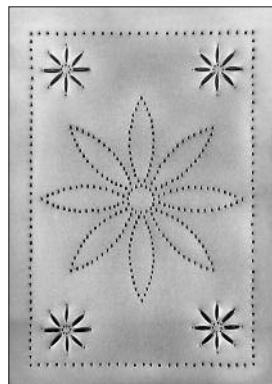
RPE 1064
10" x 14" \$12.50



RPE 1065
10" x 14" \$14.95



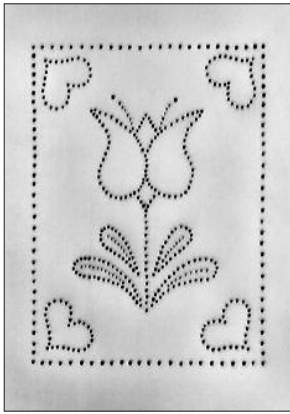
RPE 1067
10" x 14" \$13.50



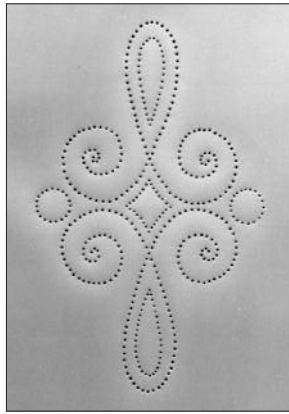
RPE 1070
10" x 14" \$13.50



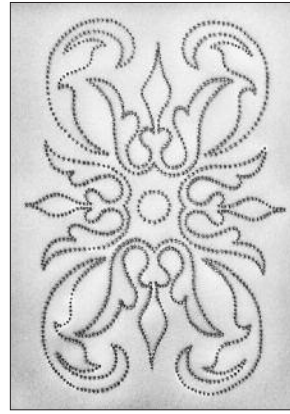
RPE 1091
10" x 14" \$13.50



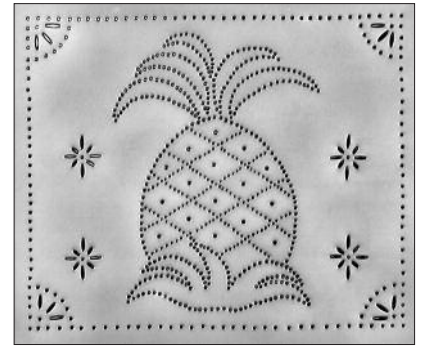
RPE 1103
10" x 14" \$12.50



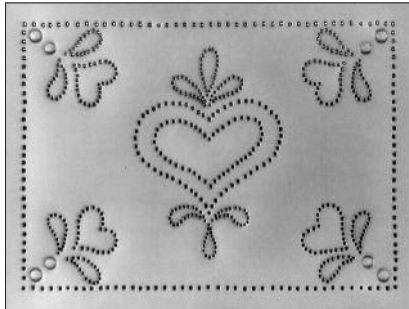
RPE 1148
10" x 14" \$12.50



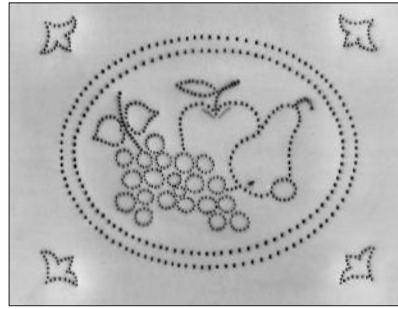
RPE 1282
10" x 14" \$14.95



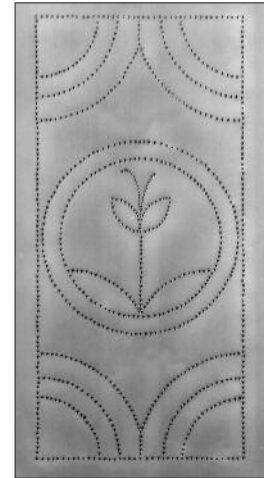
RPE 1077
14" x 12" \$14.95
14" x 10" \$13.95



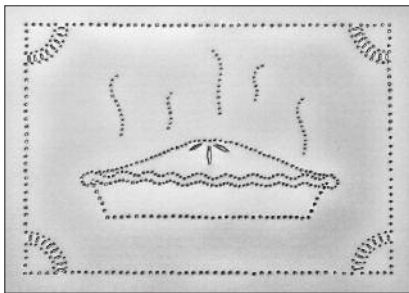
RPE 1173
12" x 9" \$10.95
14" x 10" \$12.50



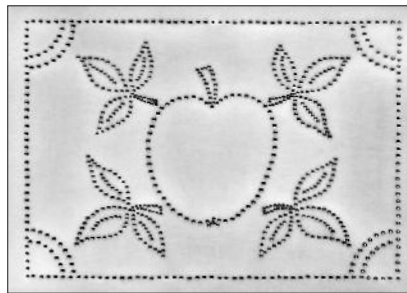
RPE 1214
10" x 10" \$10.95
12" x 10" \$12.50
14" x 10" \$13.95



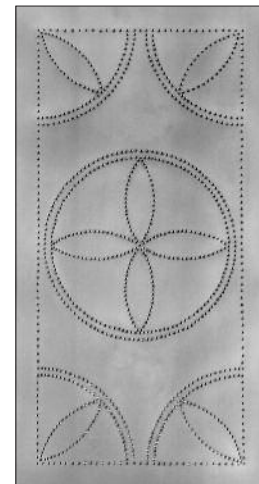
RPE 1034
10" x 14" \$12.50



RPE 1234
10" x 10" \$10.95
12" x 10" \$12.90
14" x 10" shown \$13.95
10" x 14" \$13.95



RPE 1240
14" x 10" shown \$13.95
10" x 14" \$13.95



RPE 1035
10" x 14" \$12.50

Minor specifications subject to change without notice.

Designs pictured here, as they appear or modified, or sold as patterns, finished goods, or in kits are the property of Country Accents®, and are copyright protected. They are intended for use in craft projects by individuals. The unauthorized copying or modification of these designs by any means for the purpose of distribution or resale is expressly forbidden. Fraudulent use of these designs either as shown or modified will be prosecuted to the full extent of the law. All Rights Reserved © 1988.

Lanterns and Lamps

Our Exclusive Revere Lantern Kits® & Finished Lanterns

Classic style, quality & function combine to add a glow of tradition and warmth to your home. If you enjoy the special brilliance of pierced metal lanterns and lights, you'll find these lamps and kits fit the bill!

Witch's Hat Hanging Lantern Kit — WHK-1

Makes 2 hanging lamps each 12" high and 7" diameter.

Kit contains:

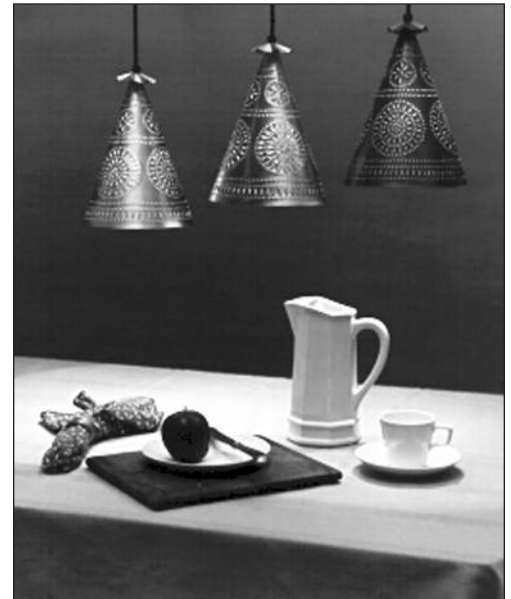
- Tin or copper for two lamps
- T-0159 1/16" punch
- T-0259 3/8" chisel
- Pattern & instruction for punching and assembly
- Pattern for cutting lantern
- 2 electric sockets & fittings
- 12 ft. lamp cord w/ plug

Tin — \$69.95 †

Copper — \$110.00 †

Extra set of Tin w/ elec. fittings, socket, wire & plug. \$24.70 †

Extra set of Copper w/ elec. fittings, socket, wire & plug. . . . \$38.00 †



These comprehensive kits give even the novice a chance to re-create these charming lanterns with a minimum of time and effort. The patterns included are of the traditional type, common to this sort of lantern. You will find this an exciting and rewarding project. With care, the patterns can be used over and over, so many lanterns can be made from the same template.

*** Note: We suggest made-for-tin solder & a 150 W iron for these projects.**

LK-1 Pierced Tin Revere Type Lantern Kit (for candle, w/ door)

Kit contains:

- Tin for two 6" x 14" lanterns
- T-0159 - 1/16" punch
- T-0259 - 3/8" chisel
- Pattern for cutting lantern
- Pattern for punching design
- Clear, step-by-step directions

Tin - \$59.85 †

Copper - \$85.95 †

Extra Sets of Metal for LK-1:

Tin - \$12.00 †

Copper - \$28.00 †

LK-2 Lantern Kit, Ready-to-electrify

Kit makes two 6" x 14" lanterns. Chain not included.

Kit contains:

- Tin for two 6" x 14" lanterns
- T-0159 - 1/16" punch
- T-0259 - 3/8" chisel
- Complete instructions for assembly and punching
- Pattern for cutting lantern
- Pattern for punching design
- 2 electric sockets, fittings, 12' cord and plug

Tin - \$65.00 †

Copper - \$87.95 †

Extra Sets of Metal for LK-2 (each set makes one lantern and includes electrical fittings):

Tin - \$20.50 †

Copper - \$34.00 †

LK-3 Miniature Lantern Kit, Ready-to-electrify

Same as LK-2, except makes TWO miniature lanterns for electrification. Each finishes out at 4 1/2" x 7" high.

Tin - \$57.65 †

Copper - \$78.75 †

Extra Sets of Metal for LK-3:

Tin - \$17.90 †

Copper - \$29.00 †

† Requires additional shipping/handling charges, minimum \$18 or 15% of order, whichever is greater.

